

# **Stark County Safety Council Presentation: Opioid & Anti-Anxiety Medication Use Among Ohio's Injured Workers**

June 11, 2015

John Hanna, R.Ph.  
BWC, Pharmacy Director

# Discussion Overview

- The BWC Pharmacy Program & Mission
- How the Mission is Accomplished
- Impact on Drug Utilization - 2014
- Impact on Opioids – 2010 - 2014
- Mission Focus Going Forward

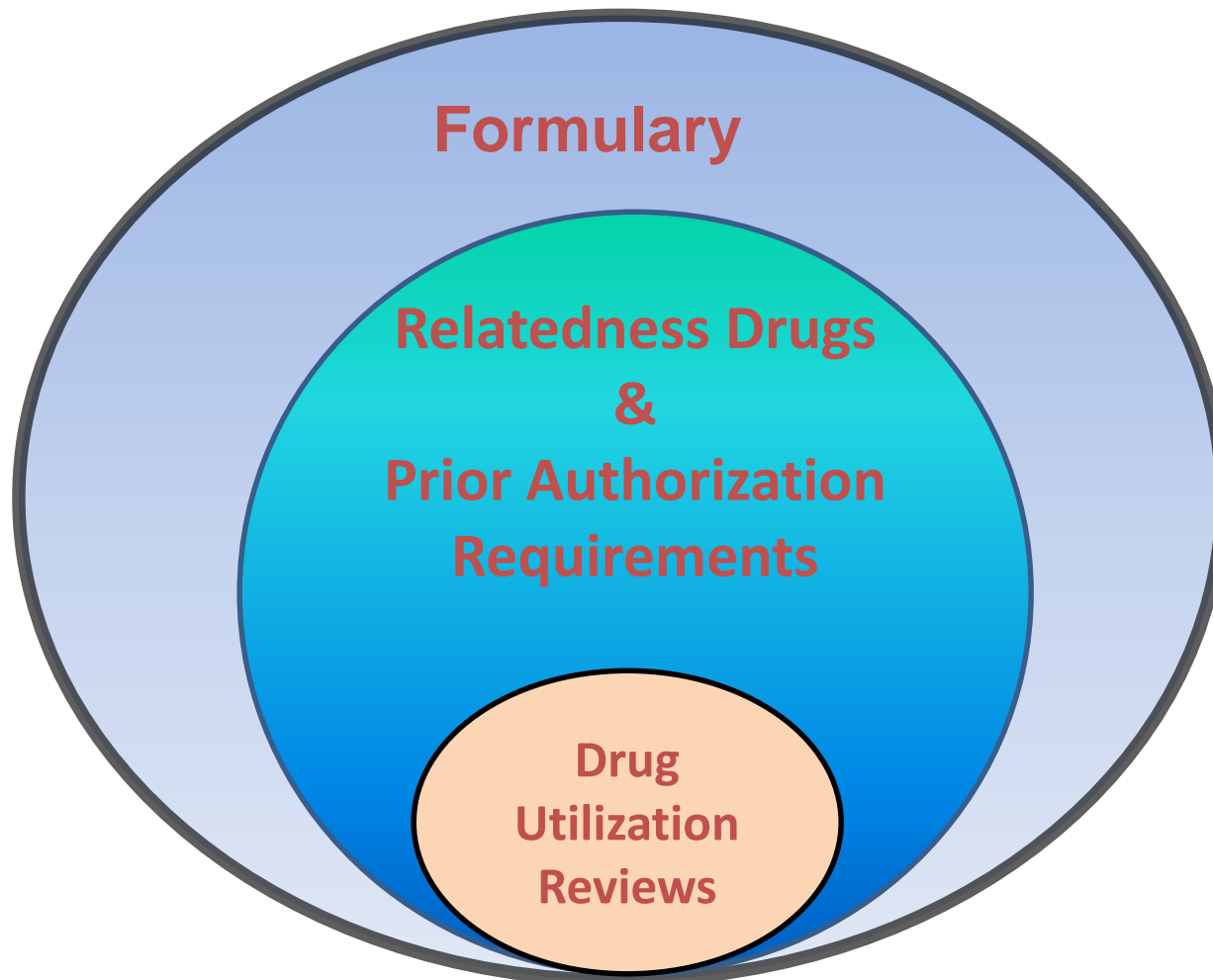
# The BWC Pharmacy Program 2014 vs 2010

- 50,022 Injured Workers received an Rx (-26%)
- 990,369 Prescriptions covered (-36%)
- \$113.4M total prescription cost (-16%)
  - Average Unit cost/Rx = \$114.52 (+8.2%)
  - Average Rx Cost/Injured Worker=\$2,185.86 (+13.7%)
- Generic Dispensing Rate = 83.4% (+4.8% vs '13)
  - Each 1% Increase in GDR = \$3.35M cost savings

# The Pharmacy Program Mission

- Manage drug utilization to ensure coverage for necessary medications to allow proper care of injured workers in a fiscally responsible manner.

# The Pharmacy Tools



# Formulary Impact: Drug Utilization

## 2014 vs 2010

- **24%** fewer Injured workers received opioids
  - Opioid prescriptions (**-38%**)
- **48%** fewer Injured workers received muscle relaxants
  - Muscle relaxant prescriptions (**-72%**)
- **79%** fewer injured workers received anti-ulcer drugs
  - Anti-Ulcer prescriptions (**-83%**)

# Formulary Impact: Drug Costs

## 2014 vs 2010

Total drug costs: **-\$22.8 million (-16.8%)**

- Opioids: **-\$19.9 million (-36%)**
- Muscle relaxants: **-\$2.8 million (-78%)**
- Anti-ulcer drugs: **-\$6.4 million (-95%)**

# Automated Rx Edits: Relatedness List Drugs

- In 2014 Automated Edits
  - Applied in the pharmacy on all Rx's
  - Stopped initial coverage of 235,000 Rx's
- Relatedness List Edits
  - May require a PA
  - Apply to 373 of 405 drug classes
  - Matches drug indication & allowed conditions
- 3900 PAs processed by the PBM Pharmacists
- 4400 PAs processed by BWC staff



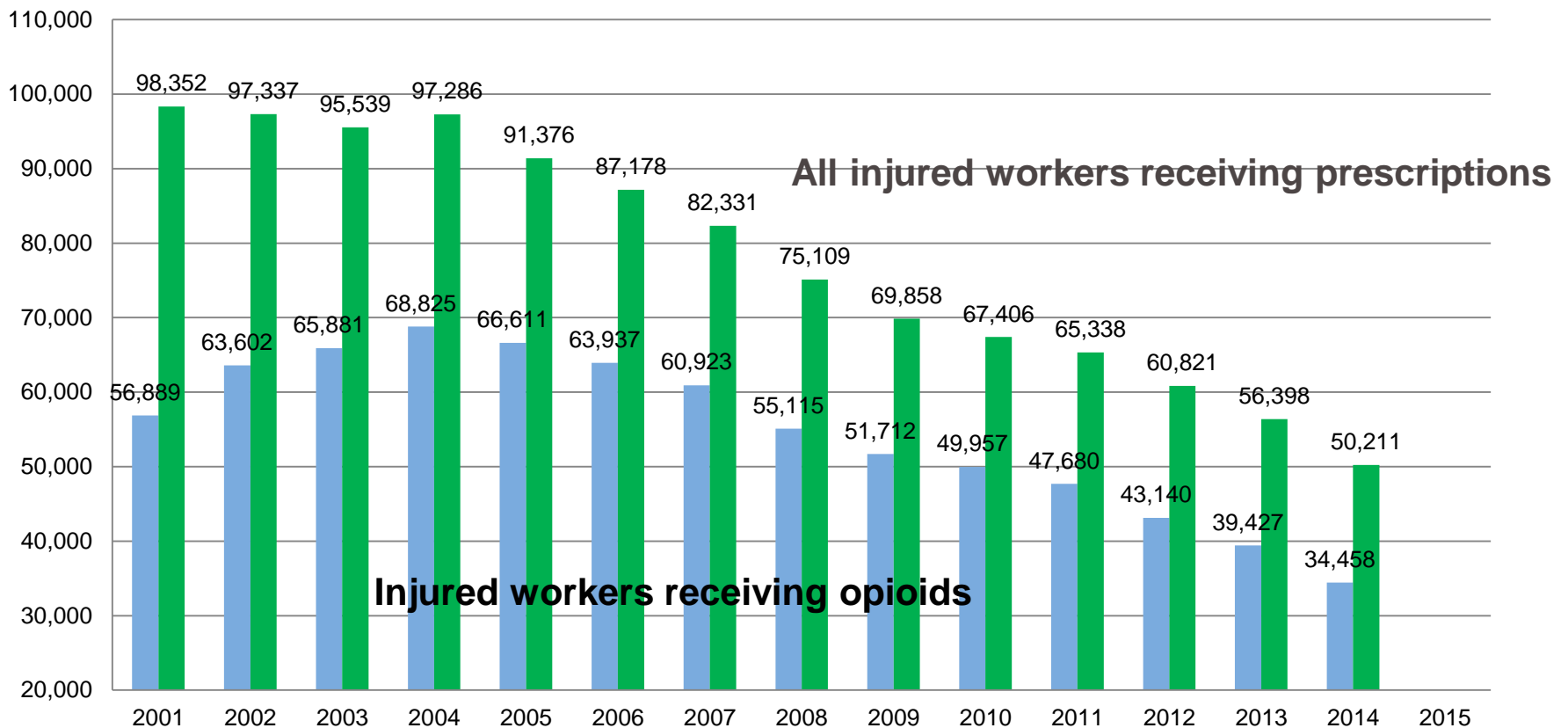
# Automated Rx Edits: Formulary & Special Claim Edits

- Rxs for certain formulary drugs require a PA
  - SR Opioids, Muscle Relaxants, Testosterone
    - Some require an allowance – Fentora, Lidoderm, Suboxone
- Special Claims Edits
  - Medical Only Claims
    - All require a PA after 60days from DOI
  - Claims with no prescriptions for 270 days
    - Require a PA for any prescription

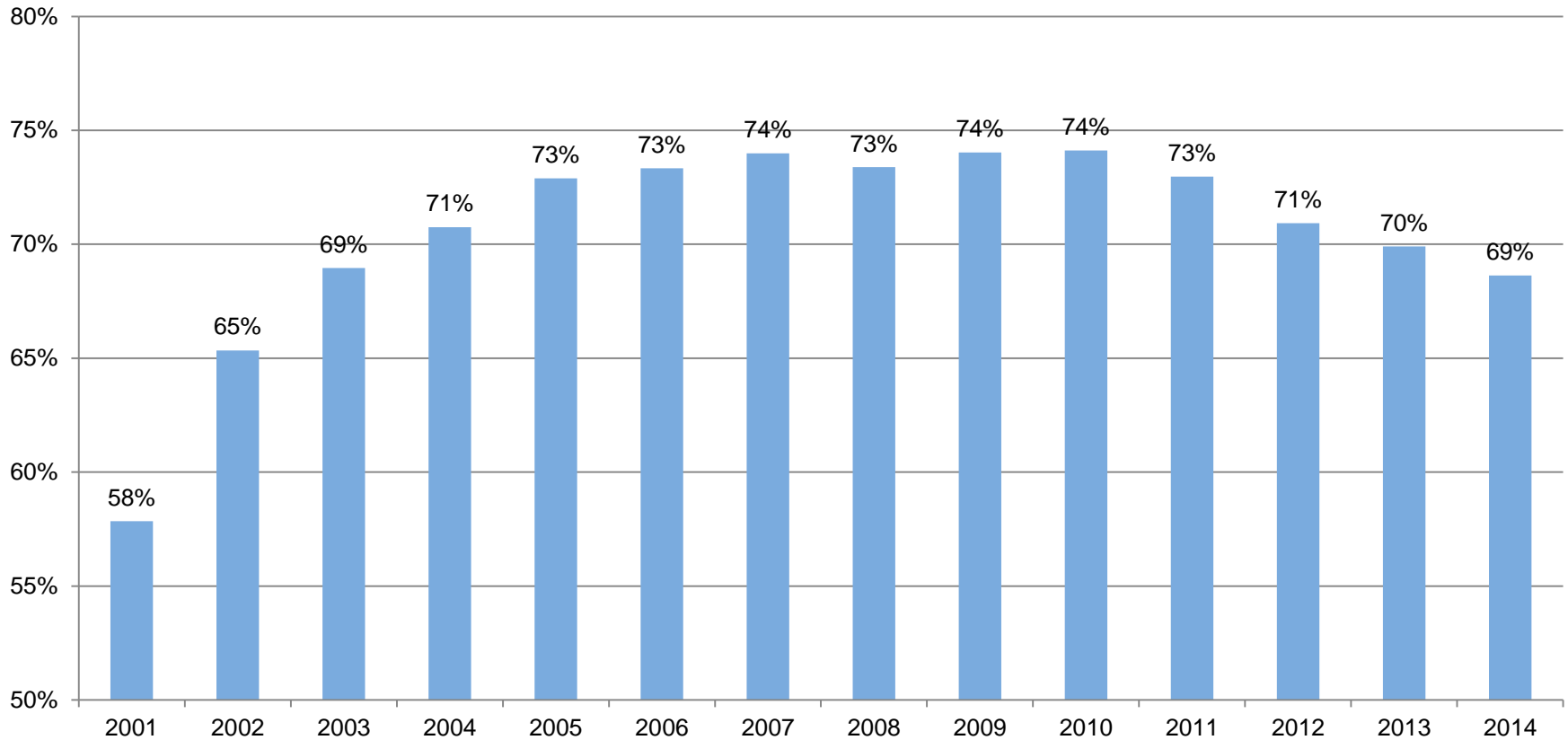
# Drug Utilization Reviews

- 2014 BWC-MCO Workgroup Recommendation
  - Transition this activity to the MCOs
  - DUR workgroup began work in June
  - New process developed
- Pilot of new process began in November 2014
  - Transition to all MCO's 7/1/2014
- 4192 DURs performed by BWC/MCOs in 2010
- 2664 DURs performed by MCOs in 2014

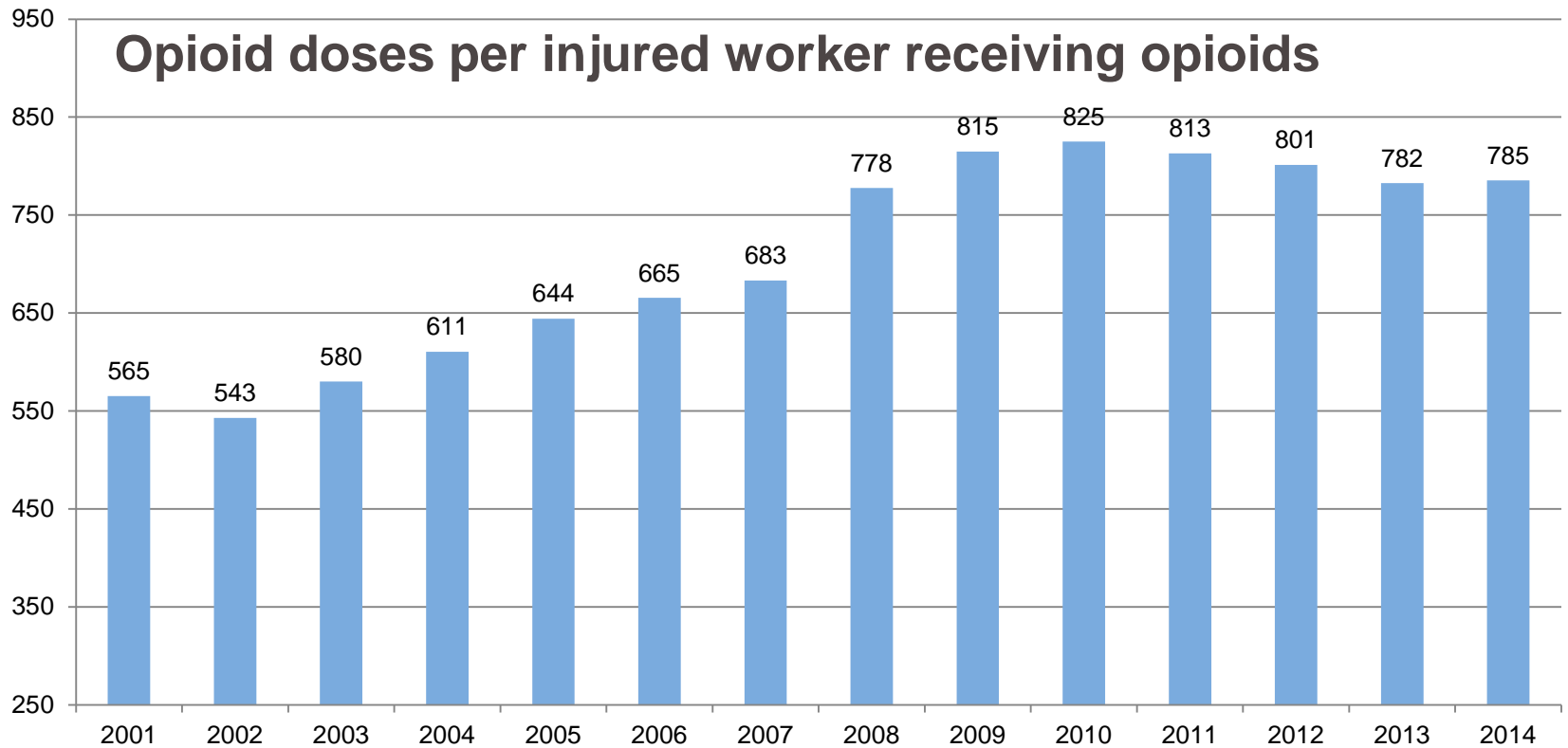
# Injured Workers Receiving Medications 2001 to 2014



# Injured Workers Receiving Opioids 2001 - 2014

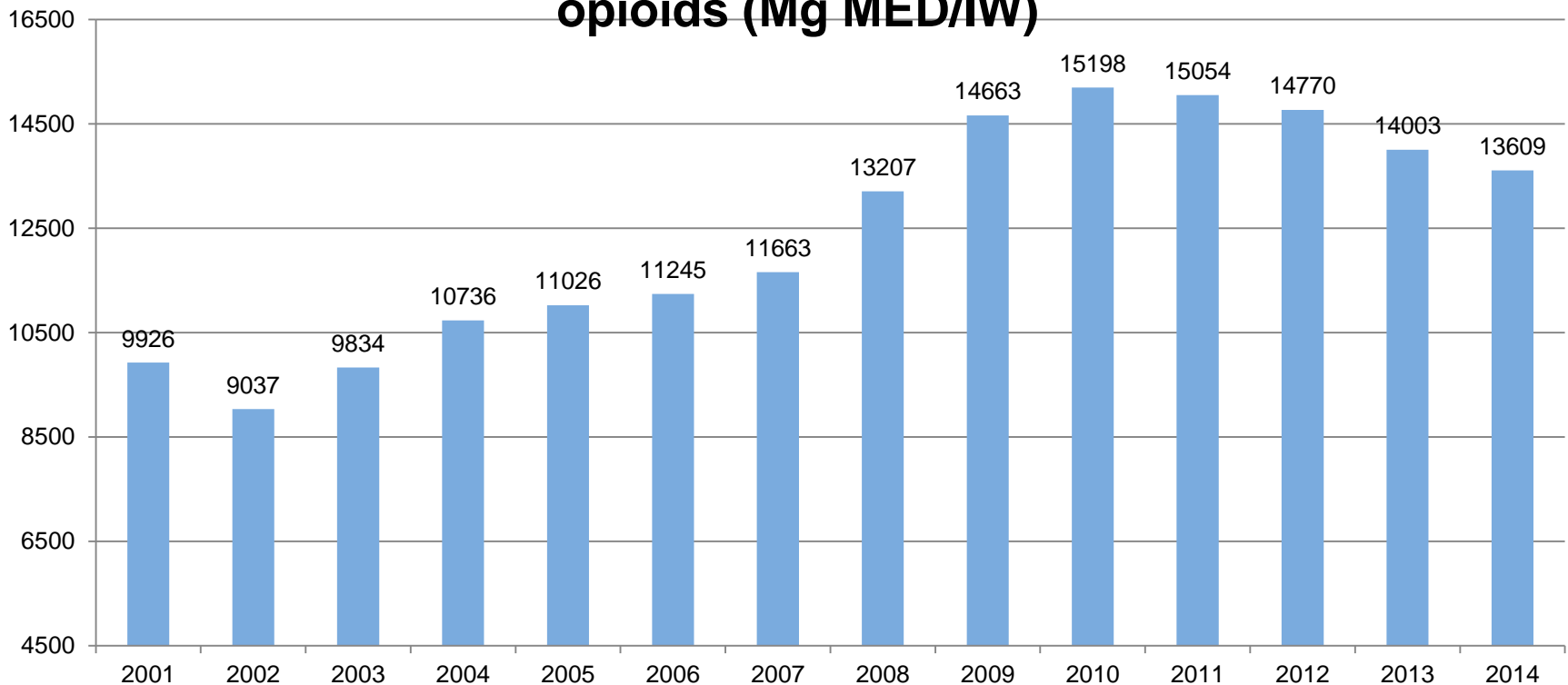


# Opioid Utilization 2001 - 2014



# Opioid Utilization 2001 - 2014

Annual opiate load per injured worker receiving opioids (Mg MED/IW)



# BWC Opiate Utilization 2010 vs. 2014

- BWC's opiate dependency guideline: 60mg MED/Day for 60 days
- In fourth quarter 2010
  - 8,689 injured workers received this dose of opiates
    - 13% of all injured workers receiving medications in 2010 were opiate dependent.
    - 17% of injured workers receiving opioids
- In fourth quarter 2014:
  - 5,469 injured workers met it;
    - 11% of all injured workers receiving medications.
    - 16% of injured workers receiving opioids

# Top 10 Highest Opiate Prescribers 2010 vs. 2014

High dose opiate prescribers - 4th quarter 2010				
Prescriber	Patients with total Mg MED/day > 399	Patients with total Mg MED/day 400 - 799	Patients with total Mg MED/day 800 - 999	Patients with total Mg MED/day > 999
Dr. A	36	15	4	17
Dr. B	24	14	4	6
Dr. C	17	14	2	1
Dr. D*	13	11	2	
Dr. E*	12	6	1	5
Dr. F	12	10	2	
Dr. J*	11	5	5	1
Dr. H	9	9		
Dr. I	8	7		1
Dr. J*	8	8		

High dose opiate prescribers - 4th quarter 2014				
Prescriber	Patients with total Mg MED/day > 399	Patients with total Mg MED/day 400 - 799	Patients with total Mg MED/day 800 - 999	Patients with total Mg MED/day > 999
Dr. B	13	8	4	1
Dr. K**	11	9	1	1
Dr. L	11	11		
Dr. M	7	6	1	
Dr. N	6	4	1	1
Dr. O	6	6		
Dr. P	6	5	1	
Dr. Q	6	5	1	
Dr. A**	5	1	3	1
Dr. W	5	5		



# Acute to Chronic Opioid Use In New Claims Date of Injury (DOI) 2011 vs. 2013

IWs with DOIs in 2011	Totals	Percent of 2011 total	IWs with DOIs in 2013	Totals	Percent of 2013 total	2011 vs. 2013 Percent change
IWs that received RX prior to July 2012	8,448		IWs that received RX Prior to 7-2014	6,001		-29%
IWs with "acute" opiate script (RX with 28 days)	4,754	56%	IWs with acute opiate script (RX with 28 days)	3,452	58%	-27%
IWs with ongoing opiate script (RX after 84 days)	4,483	53%	IWs with ongoing opiate script (RX after 84 days)	2,755	<b>46%</b>	-39%
IWs with acute and ongoing opiate Rx after July 2012	1,531	18%	IWs with acute and ongoing opiate Rx after July 2014	863	<b>14%</b>	<b>-44%</b>

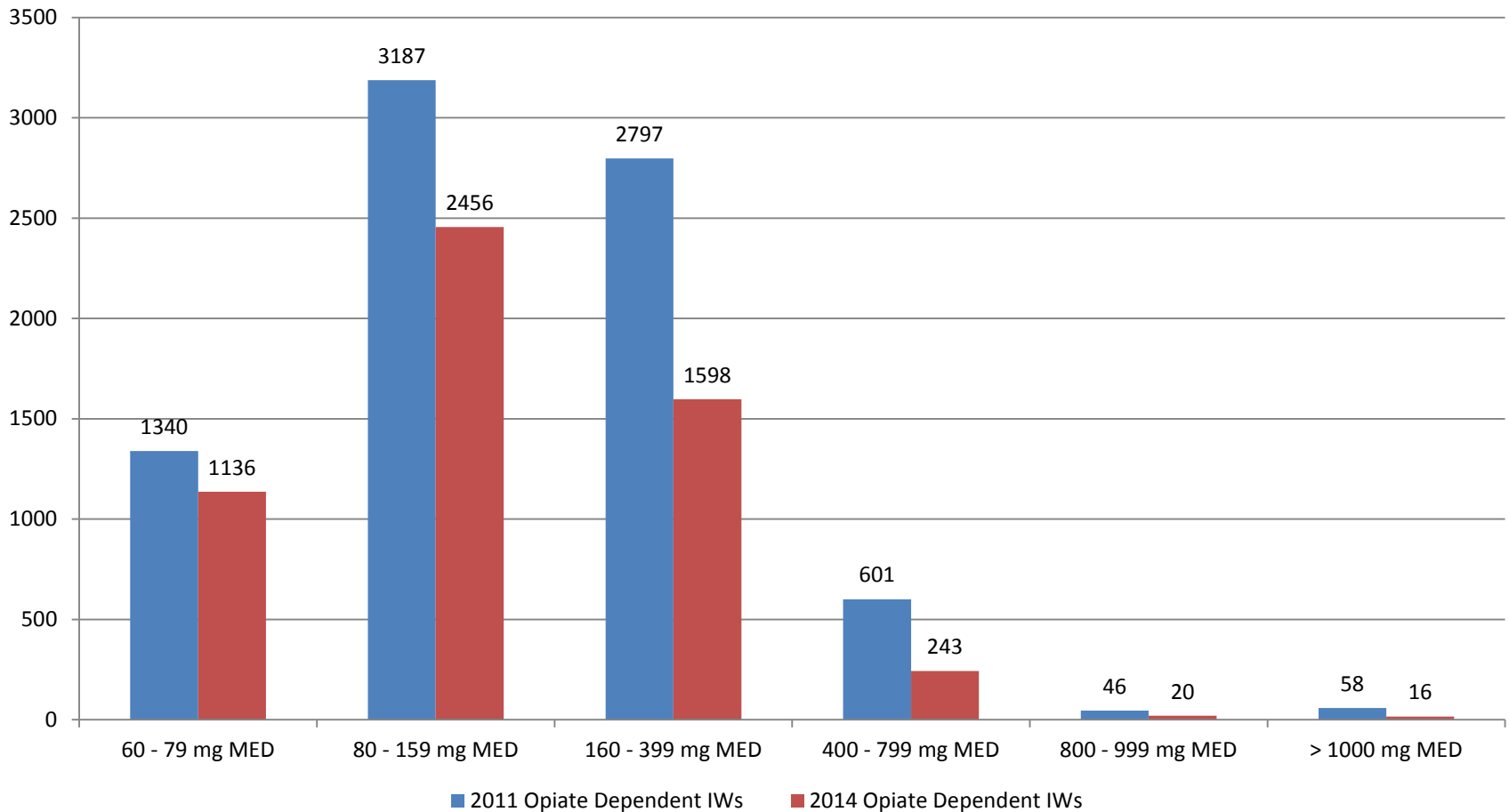
# BWC Opioids 2010 – 2014

Year	Total prescribers	Total patients	Total prescriptions	Total drug quantity	Average quantity per Rx	Average MED per Rx
January 2010 - June 2010	<b>8,543</b>	<b>37,516</b>	<b>218,197</b>	<b>18,277,457</b>	84	68
July 2010 - December 2010	8,720	36,776	216,005	18,180,934	84	70
January 2011 - June 2011	8,132	35,112	204,746	17,228,114	84	73
July 2011 - December 2011	7,980	33,488	194,240	16,192,431	83	71
January 2012 - June 2012	7,563	31,694	179,583	15,272,207	85	71
July 2012 - December 2012	7,303	29,571	166,599	14,334,947	86	71
January 2013 - June 2013	6,991	28,572	156,887	13,518,868	86	69
July 2013 - December 2013	6,880	26,836	150,790	12,878,079	85	66
January 2014 - June 2014	6,592	25,749	141,951	12,186,292	86	64
July 2014 - December 2014	<b>6,102</b>	<b>23,517</b>	<b>128,652</b>	<b>11,161,943</b>	87	62

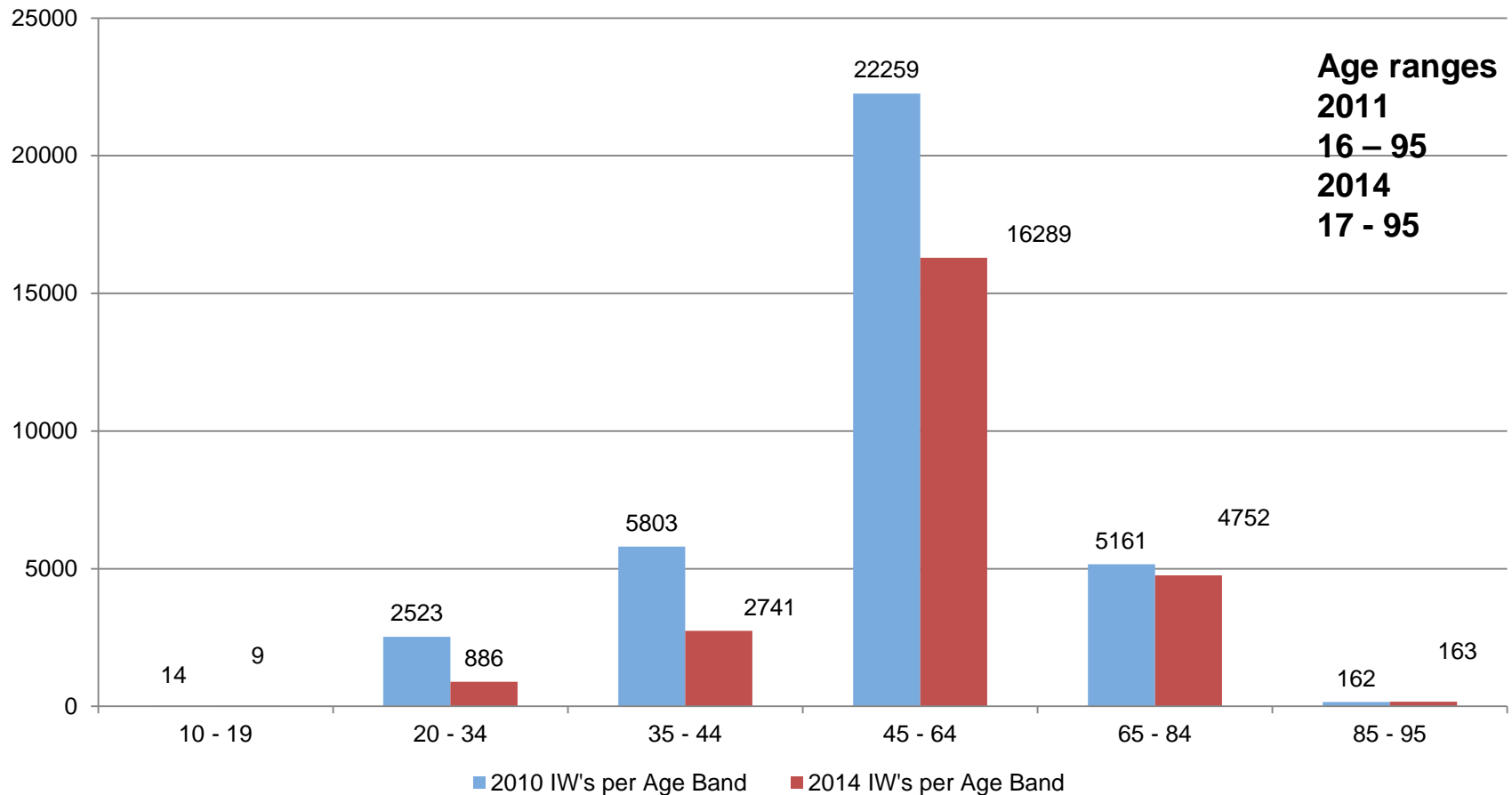
# Total Ohio Opioids 2010 - 2014

Year	Total prescribers	Total patients	All Ohio Average quantity per Rx	All Ohio Average MED per Rx	BWC Average quantity per Rx	BWC Average MED per Rx
January 2010 - June 2010	<b>50,256</b>	<b>1,865,244</b>	63	56	84	68
July 2010 - December 2010	53,500	1,908,139	64	55	84	70
January 2011 - June 2011	58,148	1,889,141	64	51	84	73
July 2011 - December 2011	80,778	1,954,246	64	52	83	71
January 2012 - June 2012	80,983	1,978,083	65	52	85	71
July 2012 - December 2012	89,671	2,088,386	66	52	86	71
January 2013 - June 2013	92,862	1,923,155	66	51	86	69
July 2013 - December 2013	89,852	1,918,102	65	51	85	66
January 2014 - June 2014	<b>82,769</b>	<b>1,882,892</b>	64	51	86	64
<b>Source: Ohio Board of Pharmacy 2014 Annual OARRS Report</b>						

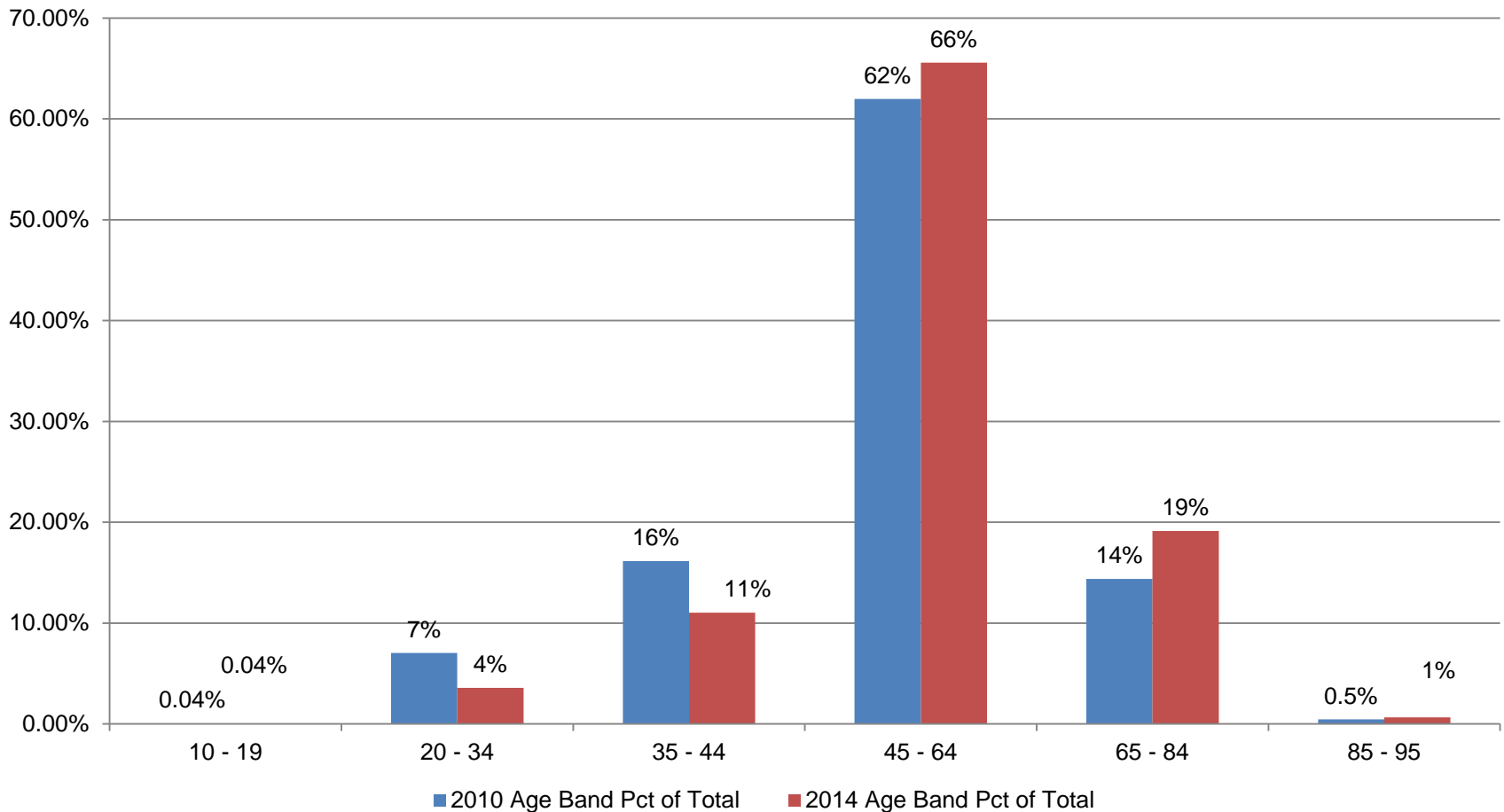
# 2011 vs 2014 Opioid Dependence (Injured Workers Above 60mg MED/Day)



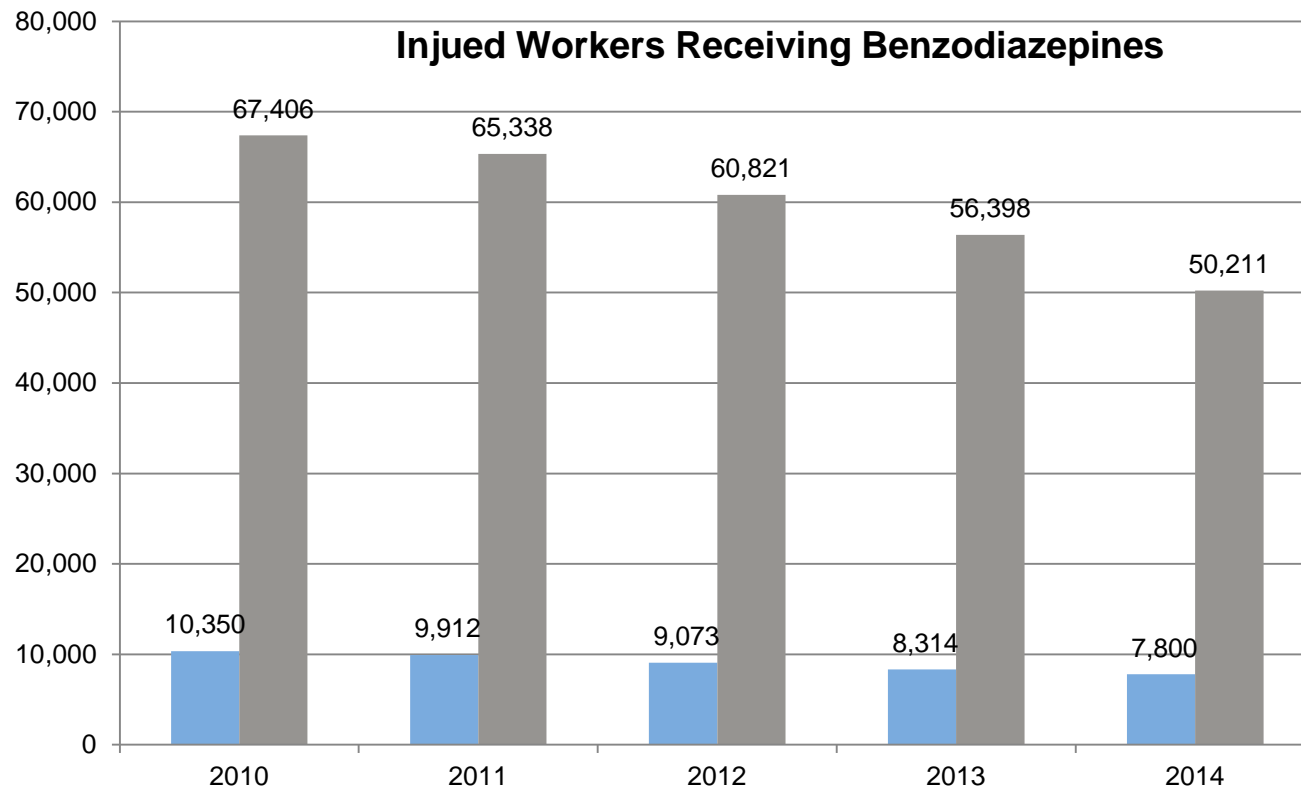
# Opioid Use By Age of Injured Worker 2011 -2014



# Percentage of Opioid Use By Injured Worker Age Q4-2011 vs Q4-2014

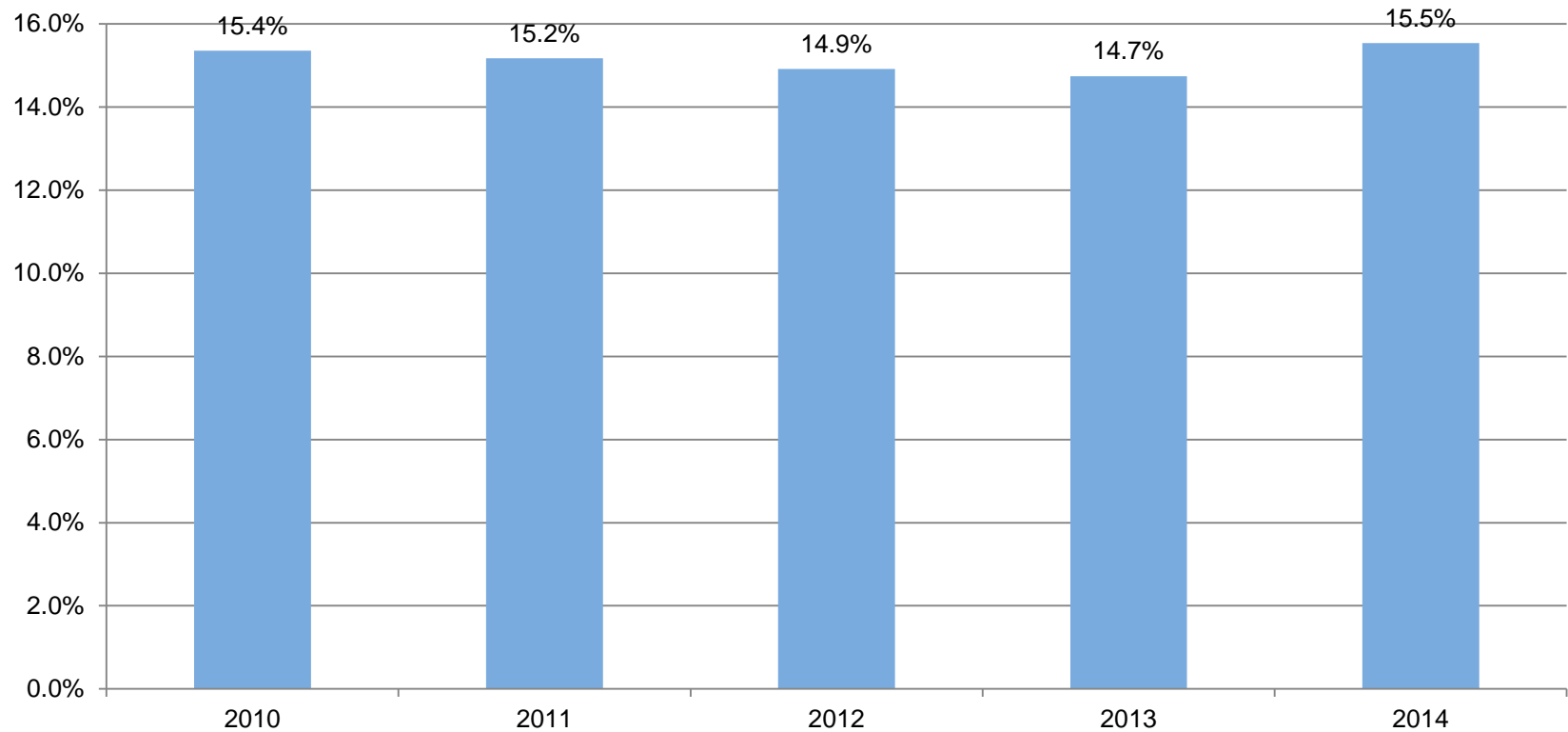


# Anti-Anxiety Agent Utilization 2010 - 2014



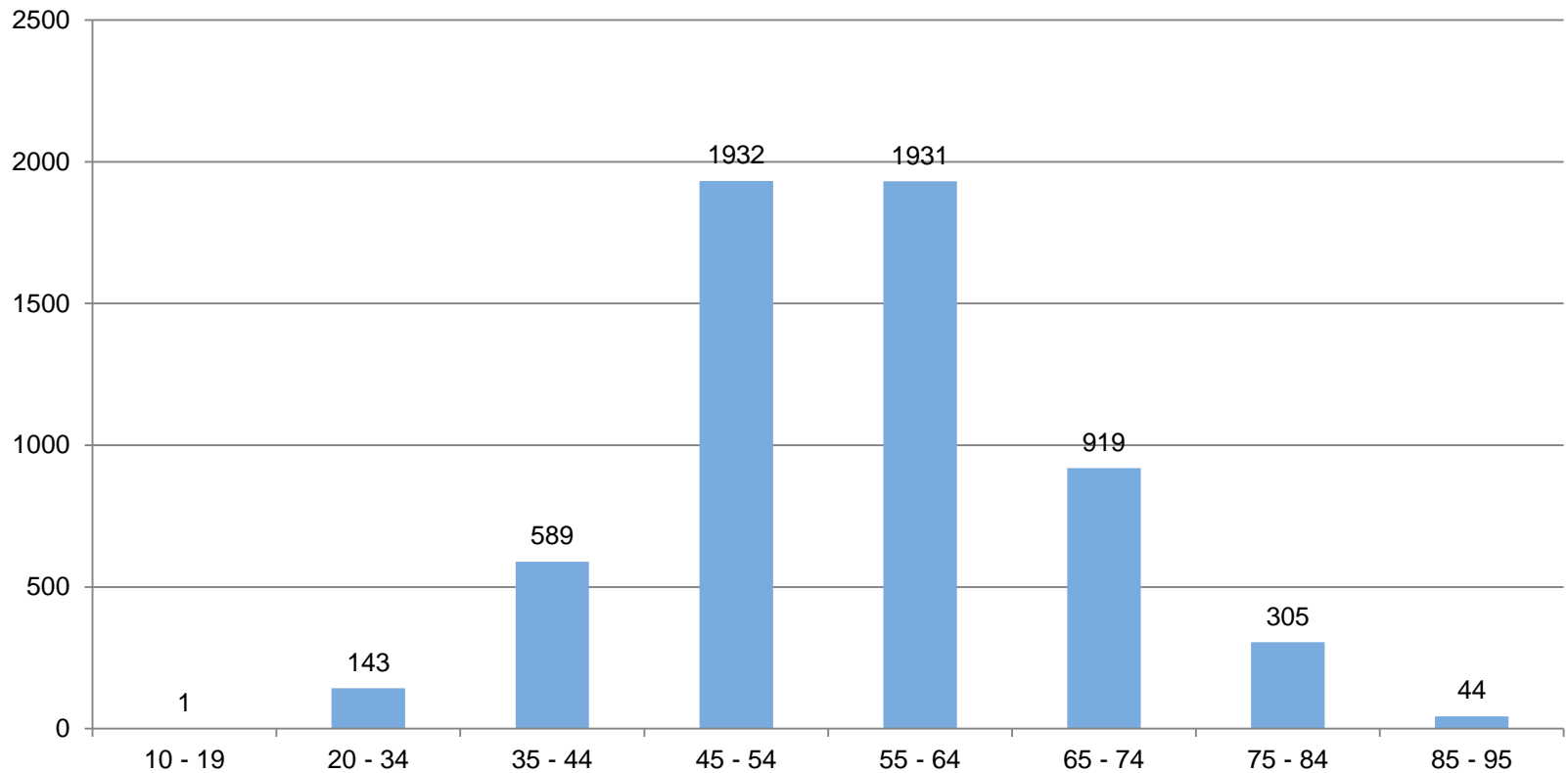
# Anti-Anxiety Agent Utilization 2010 - 2014

## Percent of IW's with Anti-anxiety Drugs

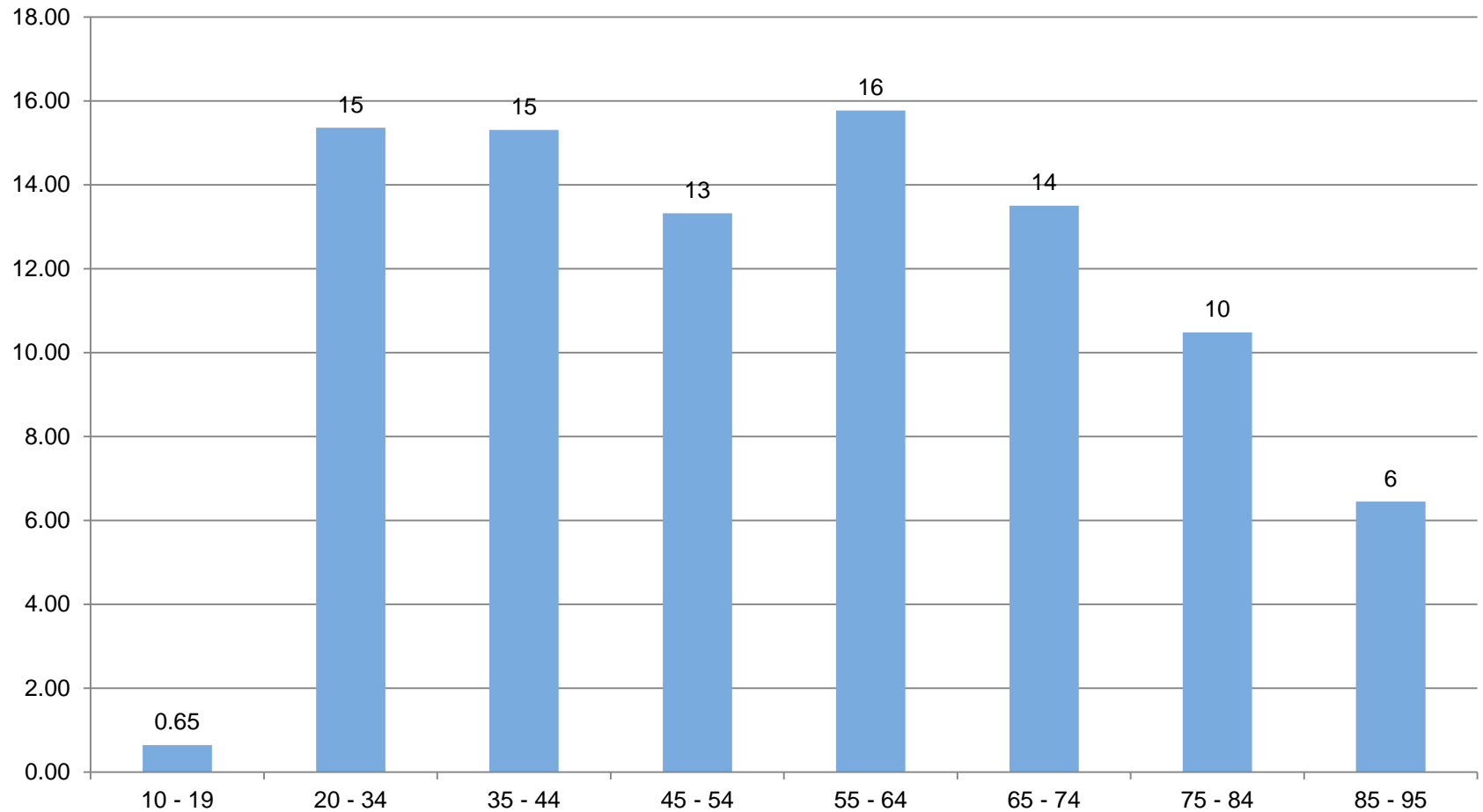




## 2014 Benzodiazepine Use By IW Ages



### Avg Daily Anti-Anxiety Drug Load (mg/IW)



# Opiates and the Injured Worker

- Five Ohioans die every day due to unintentional drug poisoning.
- Between 2006 to 2013, on average, one injured worker died every week due to drug overdose.
- Ove half of the injured worker drug overdose deaths in 2013 also involved a benzodiazepine
- An injured worker was over three times more likely to die from drugs than the general population. [http://www.healthy.ohio.gov/~media/HealthyOhio/ASSETS/Files/injury%20prevention/2012%20overdose%20data/1finalCB\\_2012\\_Bullets%20for%20reporters%20on%20drug%20related%20poisoning.ashx](http://www.healthy.ohio.gov/~media/HealthyOhio/ASSETS/Files/injury%20prevention/2012%20overdose%20data/1finalCB_2012_Bullets%20for%20reporters%20on%20drug%20related%20poisoning.ashx)

# Going Forward

- Implement an automated process to identify high risk medication regimens and trigger direct clinical staff contact with the prescriber.
- Establish an opioid prescribing rule based on best clinical practices for both prescribing as well as discontinuing these drugs.
- Initiate a retail pharmacy based medication therapy management program to coordinate medications in high risk claims.

Thank You!

Questions?